

IS Rurip - Računarsko upravljanje robama i proizvodnjom  
autor: Selimović Edhem Edo  
[selimovic.edo@bih.net.ba](mailto:selimovic.edo@bih.net.ba)  
www.rurip.com  
Živinice, januar 2020. godina

## Šerovanje foldera i printera u Windows 10

### 1. Šerovanje foldera

Prije procesa šerovanja foldera potrebno je izvršiti slijedeće:

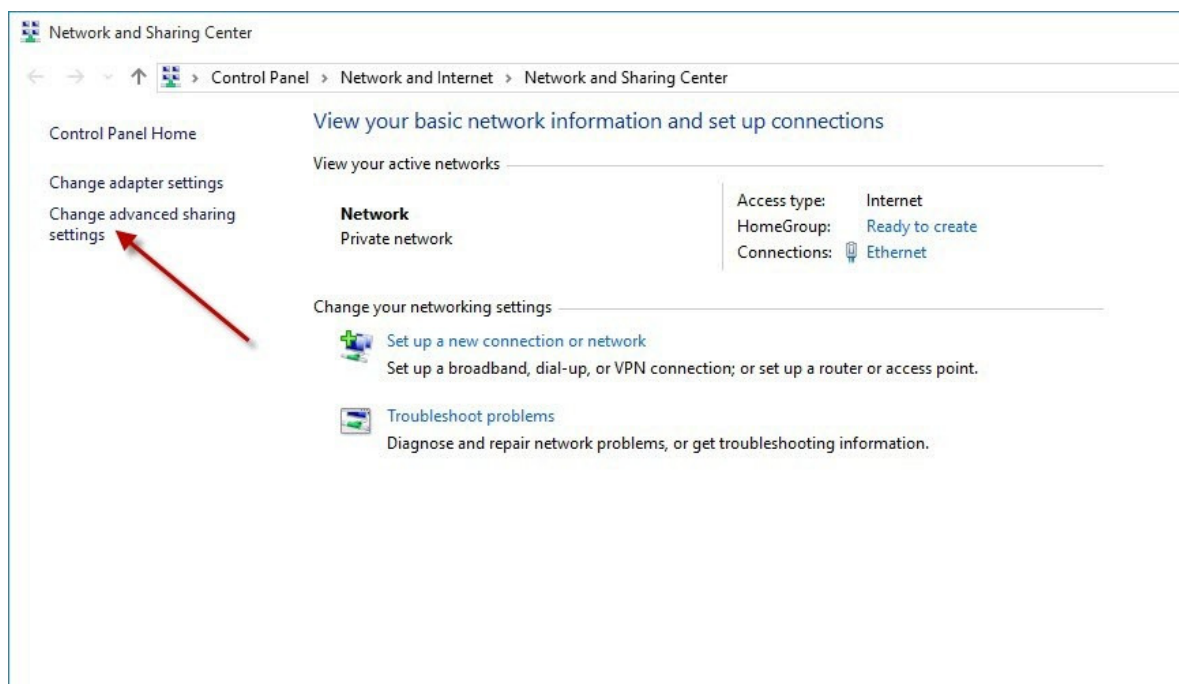
Isključiti Firewall

Desnom tipkom miša kliknuti na ikonu Network internet access-označena strelicom (donji lijevi ugao na monitoru), pojavice se fotos broj 1:



Fotos broj 1

Pa kliknuti na: Open Network and Sharing center, pojavice se fotos broj 2:



Fotos broj 2

Kliknuti na proces označen strelicom na fotosu broj 2, pojaviće se fotos broj 3

ork and Sharing Center > Advanced sharing settings

#### Change sharing options for different network profiles

Windows creates a separate network profile for each network you use. You can choose specific options for each profile.

Private (current profile) ⌵

Network discovery ⌵

When network discovery is on, this computer can see other network computers and devices and is visible to other network computers.

- Turn on network discovery
- Turn on automatic setup of network connected devices.
- Turn off network discovery

File and printer sharing ⌵

When file and printer sharing is on, files and printers that you have shared from this computer can be accessed by people on the network.

- Turn on file and printer sharing
- Turn off file and printer sharing

HomeGroup connections ⌵

Typically, Windows manages the connections to other homegroup computers. But if you have the same user accounts and passwords on all of your computers, you can have HomeGroup use your account instead.

- Allow Windows to manage homegroup connections (recommended)
- Use user accounts and passwords to connect to other computers

Guest or Public ⌵

All Networks ⌵



Fotos broj 3

Postaviti opcije kao na fotosu broj 3 i kliknuti na proces označen strelicom na fotosu 3, pojaviće se fotos broj 4.

### Change sharing options for different network profiles

Windows creates a separate network profile for each network you use. You can choose specific options for each profile.

Private (current profile) ⌵

Guest or Public ⌵

All Networks ⌶

#### Public folder sharing

When Public folder sharing is on, people on the network, including homegroup members, can access files in the Public folders.

- Turn on sharing so anyone with network access can read and write files in the Public folders
- Turn off Public folder sharing (people logged on to this computer can still access these folders)

#### Media streaming

When media streaming is on, people and devices on the network can access pictures, music, and videos on this computer. This computer can also find media on the network.

[Choose media streaming options...](#)

#### File sharing connections

Windows uses 128-bit encryption to help protect file sharing connections. Some devices don't support 128-bit encryption and must use 40- or 56-bit encryption.

- Use 128-bit encryption to help protect file sharing connections (recommended)
- Enable file sharing for devices that use 40- or 56-bit encryption

#### Password protected sharing

When password protected sharing is on, only people who have a user account and password on this computer can access shared files, printers attached to this computer, and the Public folders. To give other people access, you must turn off password protected sharing.

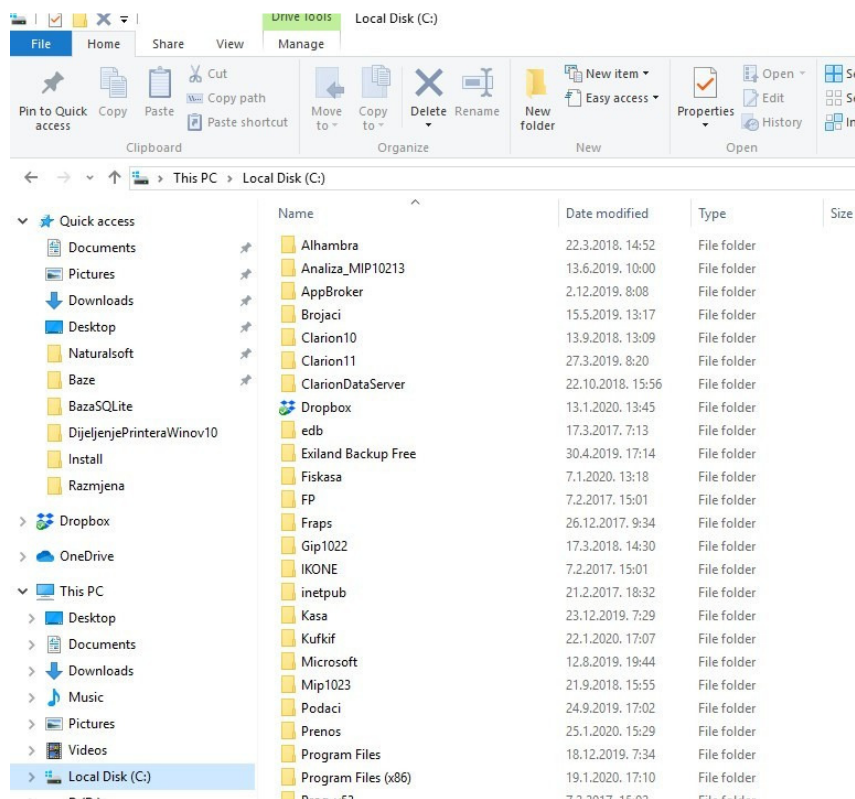
- Turn on password protected sharing
- Turn off password protected sharing

## Fotos broj 4

Postaviti opcije kao na fotosu broj 4.

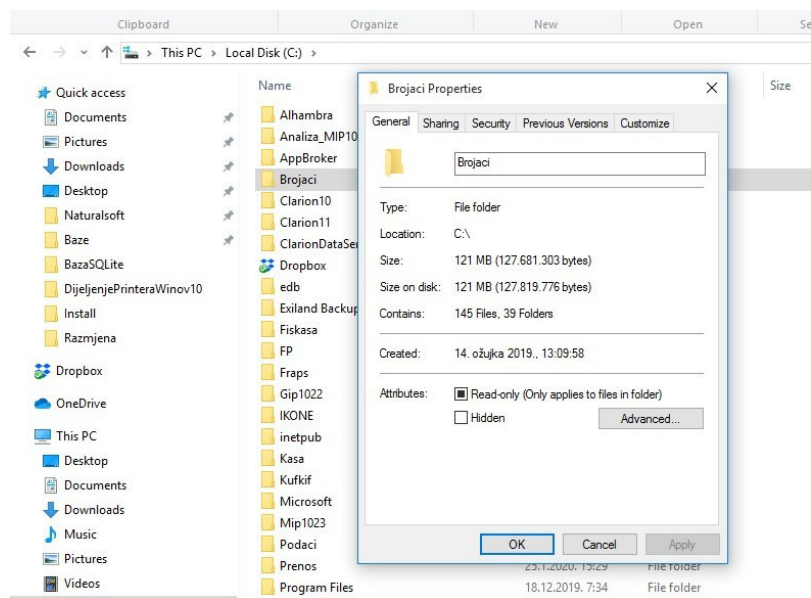
\*\*\*\*\*

Otvoriti File Explorer, sa mišem pozicionirati se na folder koji se želi šerovati, u ovom slučaju folder Brojaci, fotografija broj 1;



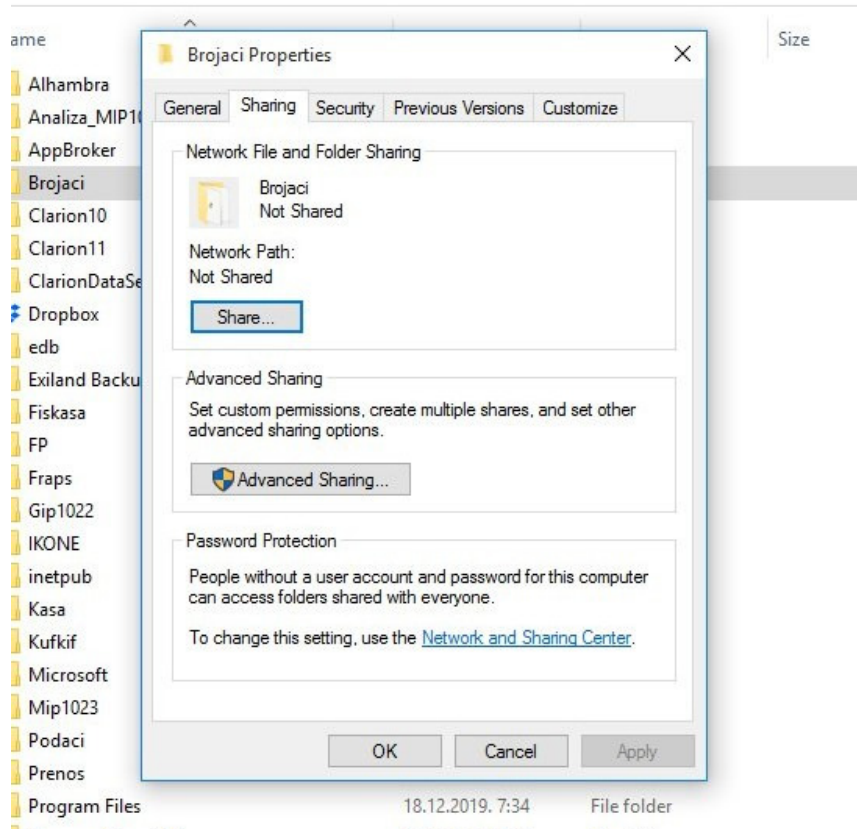
Fotografija broj  
1

Kliknuti desnom tipkom miša na folder Brajaci i na prikazanom podajućem menija kliknuti mišem na; Properties, pokazaće se proces, fotografija broj 2;



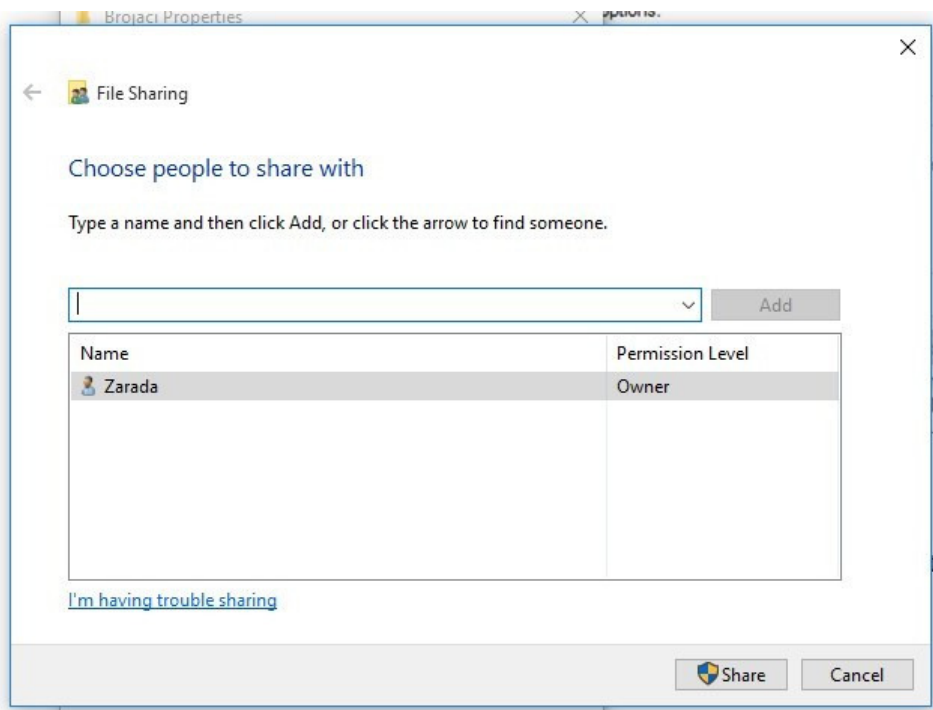
Fotografija broj 2

İći na karticu Sharing, proces na fotosu broj 2, pokazaće se proces, fotografija 3;



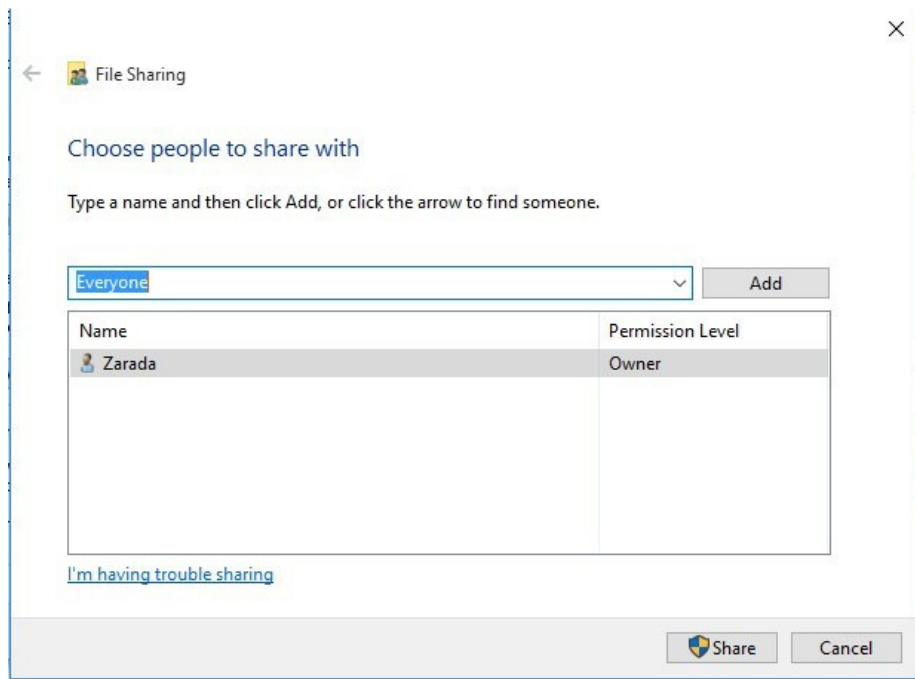
Fotografija broj 3

Kliknuti mišem na gumb Share na fotografiji 3, pojaviće se proproc, fotografija 4;



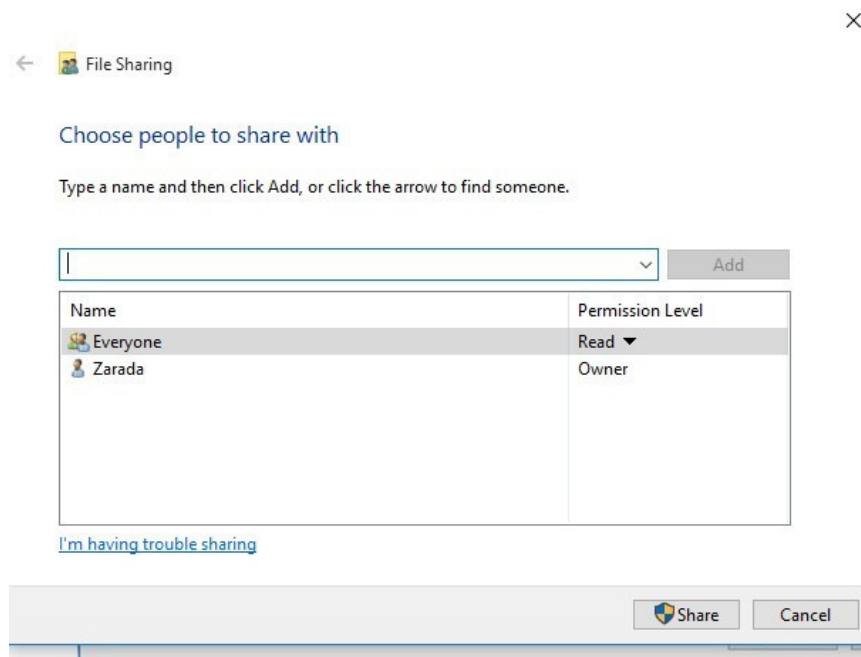
Fotografija broj 4

Na padajućem meniju odaberite proces kao na fotografiji broj 5;



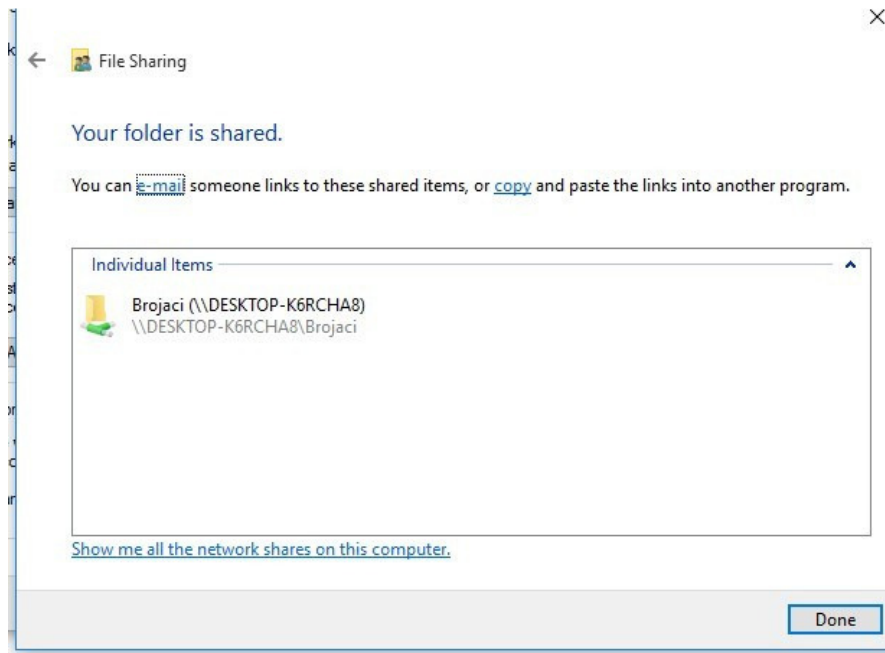
Fotografija broj 5

Kliknite mišem na gumb Add (fotografija broj 5), pojaviće se proces, fotografija 6;



Fotografija broj 6

Odredite ovlaštenja za Everyone na padajućem meniju (Read) i kliknite mišem na gumb Share (fotografija broj 6), pojaviće se proces, fotografija 7;



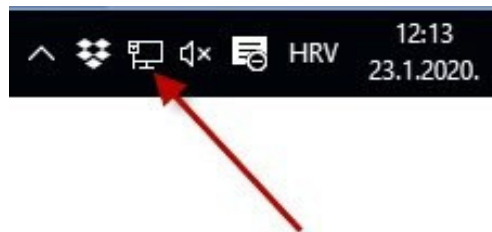
Fotografija broj 7

Kliknite mišem na gumb Done (fotografija broj 7) i time smo šerovali folder Brojaci.

### 1. Šerovanje printera na lan mreži

Isključiti Firewall

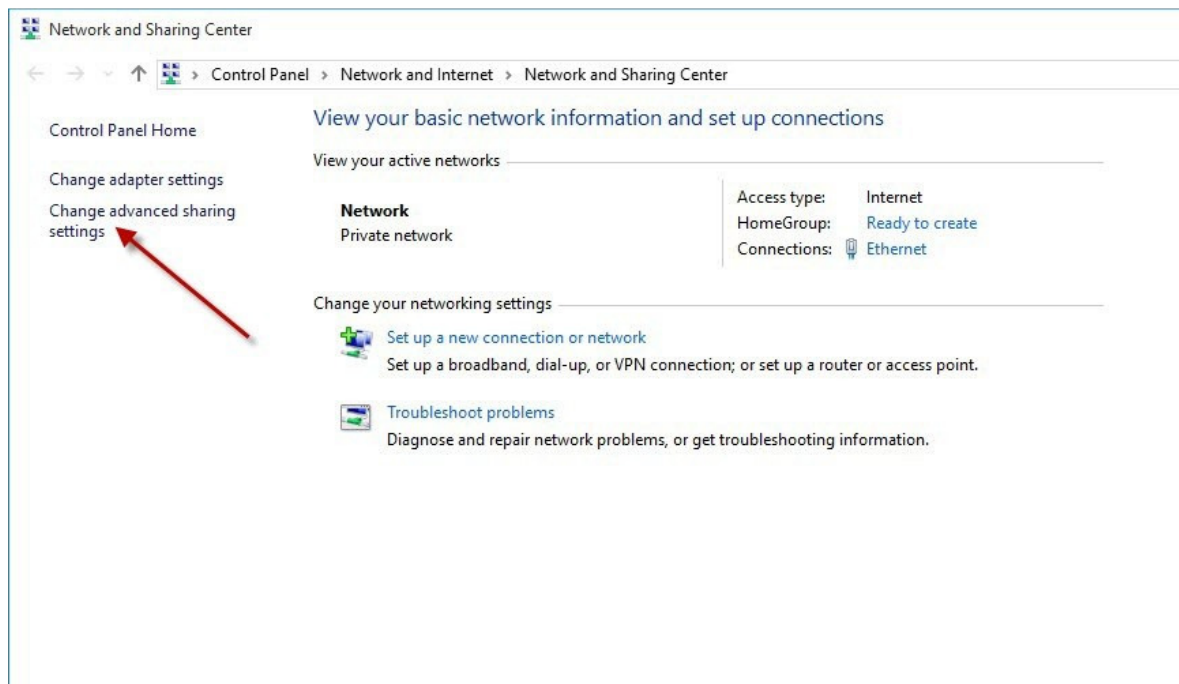
Desnom tipkom miša kliknuti na ikonu Network internet access-označena strelicom (donji lijevi ugao na monitoru), pojavit će se fotos broj 1:



Fotos broj 1

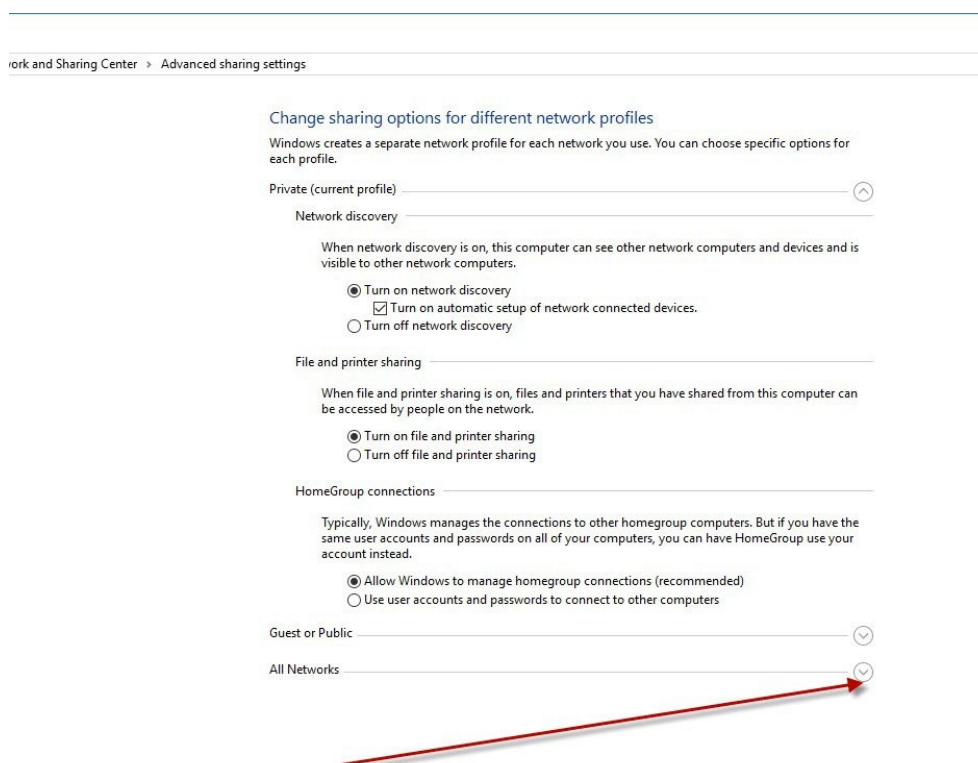
Pa kliknuti na: Open Network and Sharing center, pojavit će se fotos broj 2:





Fotos broj 2

Kliknuti na proces označen strelicom na fotosu broj 2, pojaviće se fotos broj 3



Fotos broj 3



Postaviti opcije kao na fotosu broj 3 i kliknuti na proces označen strelicom na fotosu 3, pojavitiće se fotos broj 4.

#### Advanced sharing settings

##### Change sharing options for different network profiles

Windows creates a separate network profile for each network you use. You can choose specific options for each profile.

Private (current profile) 

Guest or Public 

All Networks 

##### Public folder sharing

When Public folder sharing is on, people on the network, including homegroup members, can access files in the Public folders.

- Turn on sharing so anyone with network access can read and write files in the Public folders
- Turn off Public folder sharing (people logged on to this computer can still access these folders)

##### Media streaming

When media streaming is on, people and devices on the network can access pictures, music, and videos on this computer. This computer can also find media on the network.

[Choose media streaming options...](#)

##### File sharing connections

Windows uses 128-bit encryption to help protect file sharing connections. Some devices don't support 128-bit encryption and must use 40- or 56-bit encryption.

- Use 128-bit encryption to help protect file sharing connections (recommended)
- Enable file sharing for devices that use 40- or 56-bit encryption

##### Password protected sharing

When password protected sharing is on, only people who have a user account and password on this computer can access shared files, printers attached to this computer, and the Public folders. To give other people access, you must turn off password protected sharing.

- Turn on password protected sharing
- Turn off password protected sharing

## Fotos broj 4

Postaviti opcije kao na fotosu broj 4.

Isključiti opciju glavnog sa printera koji se šeruje ako je tako označen,

Šerovati printer sa računara na koji je instalisan.

Na računaru klijentu putem Control Panel-a pronaći šerovani printer i kliknuti na njega da se izvrši njegova instalacija.

Ovim smo izvršili šerovanje printera sa klijenta.

Selimović Edhem Edo